

## Kininogen, low molecular weight from Human Plasma

np001046

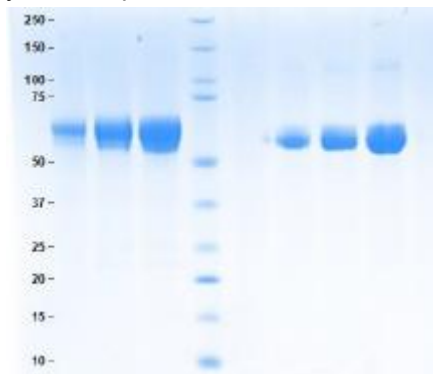
**Storage temperature:** -20°C.

### Introduction

Extinction Coefficient: 0.59.

Low Molecular Weight Kininogen is involved in blood pressure regulation since it is an endogenous protein substrate for tissue kallikrein. Proteolytic cleavage by kallikrein releases vasoactive bradykinin from LMW kininogen. In addition, LMW kininogen, like HMW kininogen, is a major extracellular cysteine protease inhibitor.

Prepared from plasma shown to be non reactive for HBsAg, anti-HCV, anti-HBc, and negative for anti-HIV 1 & 2 by FDA-required tests.



SDS-PAGE: 4-12% Bis-Tris gel, 1x MES

1. Kininogen, LMW 5 µg (Heated/Reduced)
2. Kininogen, LMW 10 µg (Heated/Reduced)
3. Kininogen, LMW 20 µg (Heated/Reduced)
4. Standard
5. Blank
6. Kininogen, LMW 5 µg (Not Heated/Non-Reduced)
7. Kininogen, LMW 10 µg (Not Heated/Non-Reduced)
8. Kininogen, LMW 20 µg (Not Heated/Non-Reduced)

Protein Determination:

Extinction Coefficient (E) = 0.59 (0.1% at 280 nm, 1 cm pathway)

Molecular Weight: 65,000 Da

Physical Specifications:

Form: Lyophilized

Purity: ≥ 95% by SDS-PAGE

Considerations:

Storage Conditions: ≤ -20 °C

Stability: > 1 year



---

**Buffer:**

Lyophilized from 10 mM sodium acetate, pH 5.5, with 200 mM NaCl.

aladdin®